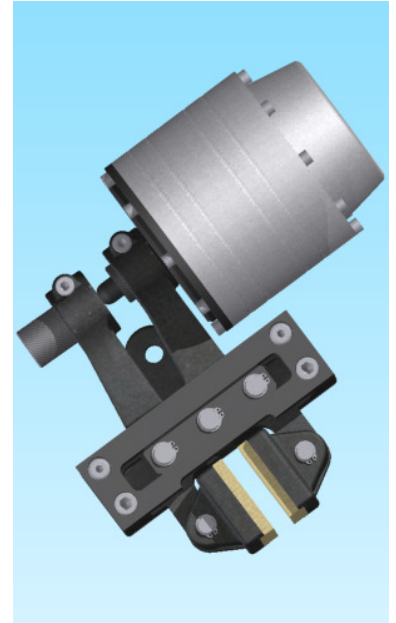
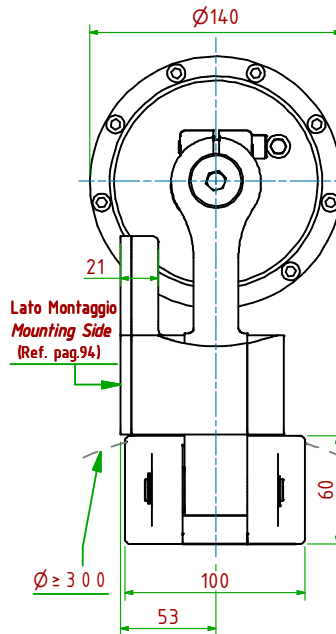
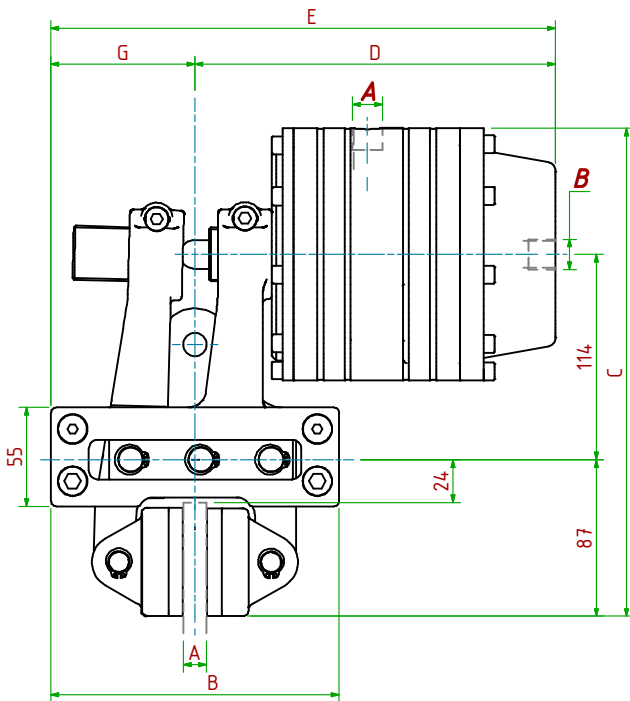


PPH-PN033/□□□

Pneumatico DUO / Pneumatically DUO



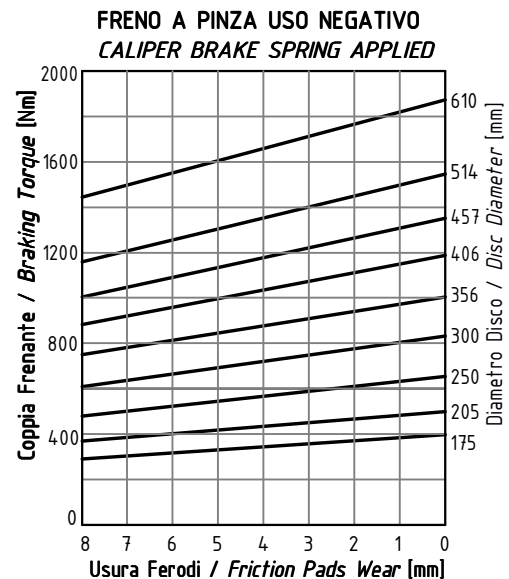
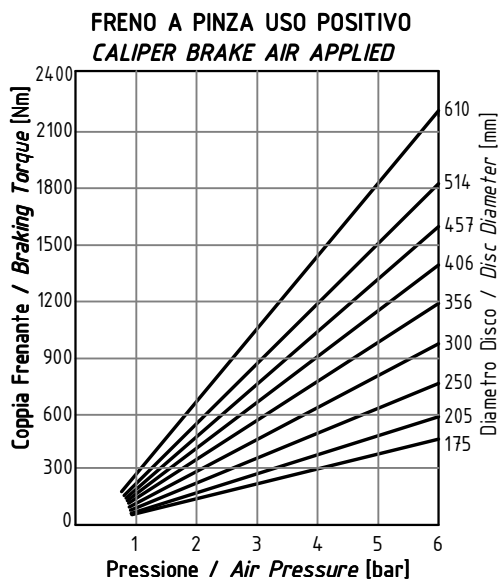
**Funzionamento Positivo/Pneumatically Applied**

- Pressione di Lavoro/Operating Pressure **Pl= 6bar**
- Alimentazione Cilindro/Pneumatic Cylinder Supply **A: 3/8"Gas**
- Volume Max Cilindro/Max Cylinder Volume **110 cm<sup>3</sup>**
- Coppia Frenante/Braking Torque **Md= [Ftx(Φ(m)/2-0.029(m))]**

**Funzionamento Negativo/Pneumatically Released**

- Pressione di Apertura/Release Pressure **Pa= 6bar**
- Alimentazione Cilindro/Spring Applied Cylinder Supply **B: 3/8"Gas**
- Volume Max Cilindro/Max Cylinder Volume **160 cm<sup>3</sup>**
- Usura Ferodi Massima Totale/Maximum total wear of pads =9mm

MODELLO/MODEL	CODICE/ CODE	A	B	C	DMax	EMax	G	Forza Frenante: Positivo-Negativo / Braking Force	Peso
PPH-PN033/12.7	19.56.033.03	12.7	160	271	200	280	80	Ft <sub>pos</sub> = 8020N (6bar) Ft <sub>neg</sub> = 6800N (0bar)	14.8 kg
PPH-PN033/25.4	19.56.033.04	25.4	180	271	207	297	90	Ft <sub>pos</sub> = 8020N (6bar) Ft <sub>neg</sub> = 6800N (0bar)	15.2 kg



**Coppia Frenante Md**

La coppia frenante iniziale può essere dal 30% al 50% in meno rispetto al valore nominale, fino al completo assestamento del ferodo sulla superficie del disco.

**Braking Torque Md**

The initial braking torque can be from 30% up to 50% less than nominal torque, until the friction pad works correctly on the disc surface.