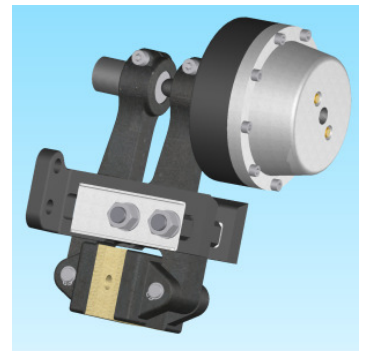
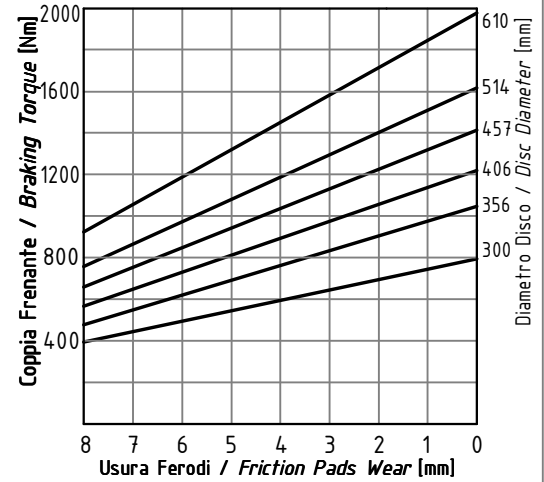
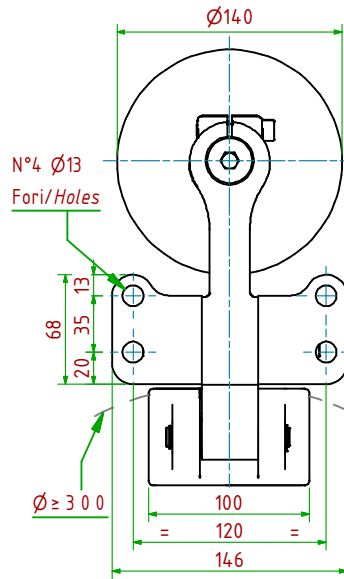
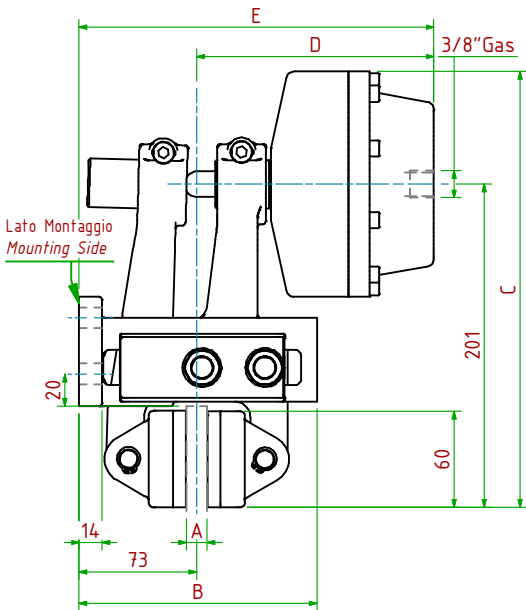


PPHP-N330/□□□

Pneumatico Negativo / Pneumatically Released

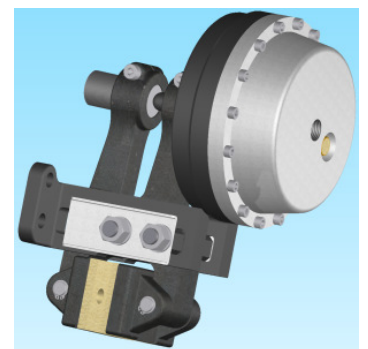
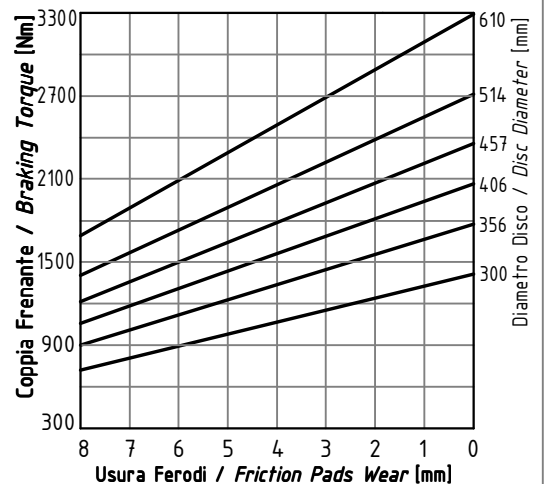
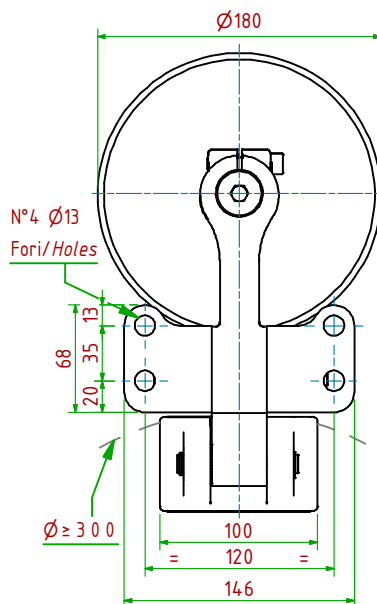
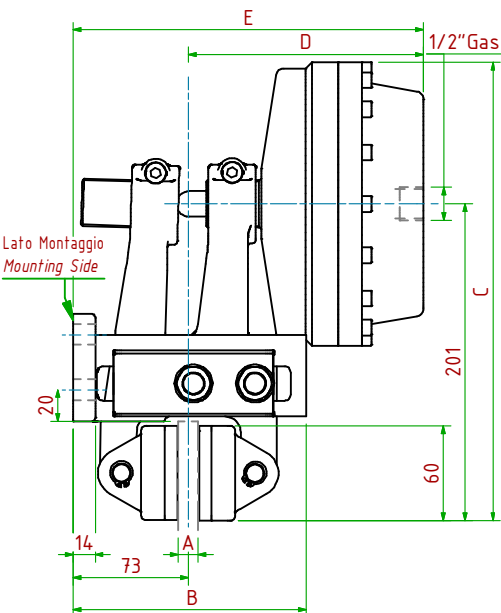


- Pressione di Apertura/Release Pressure: **Pa= 6bar** - Volume Max Cilindro/Max Cylinder Volume: **160cm³**
- Coppia Frenante/Braking Torque: **Md= [Ftx(Φ(m)/2-0.033(m))]**
- Importante:** La Coppia Frenante Iniziale può essere più bassa del 30%-50% **Warning:** Initial Braking Torque can be lower of 30%-50%
- Usura Ferodi Massima Totale/Maximum total wear of pads =9mm

MODELLO/MODEL	CODICE/ CODE	A	B	C	D _{Max}	E _{Max}	Forza Frenante/Braking Force	Peso
PPHP-N330/12.7	19.36.330.03	12.7	148	271	147	220	Ft= 6900N (0bar)	12.0kg
PPHP-N330/25.4	19.36.330.04	25.4	148	271	153	226	Ft= 6900N (0bar)	12.2kg

PPHP-N340/□□□

Pneumatico Negativo / Pneumatically Released



- Pressione di Apertura/Release Pressure: **Pa= 6bar** - Volume Max Cilindro/Max Cylinder Volume: **285cm³**
- Coppia Frenante/Braking Torque: **Md= [Ftx(Φ(m)/2-0.033(m))]**
- Importante:** La Coppia Frenante Iniziale può essere più bassa del 30%-50% **Warning:** Initial Braking Torque can be lower of 30%-50%
- Usura Ferodi Massima Totale/Maximum total wear of pads =9mm

MODELLO/MODEL	CODICE/ CODE	A	B	C	D _{Max}	E _{Max}	Forza Frenante/Braking Force	Peso
PPHP-N340/12.7	19.36.340.03	12.7	148	291	149	222	Ft= 12100N (0bar)	14.5kg
PPHP-N340/25.4	19.36.340.04	25.4	148	291	155	228	Ft= 12100N (0bar)	14.7kg