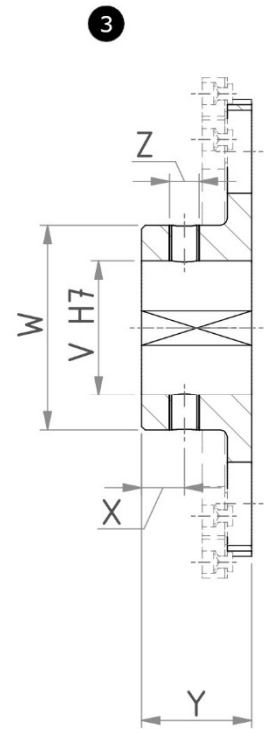
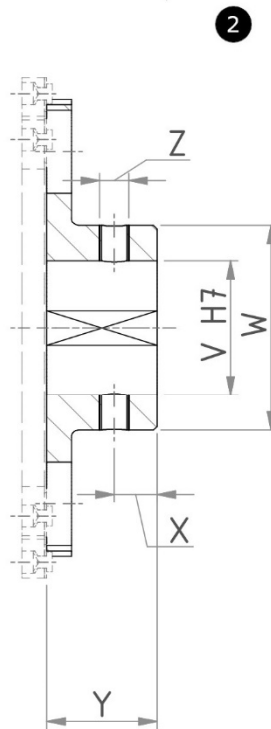
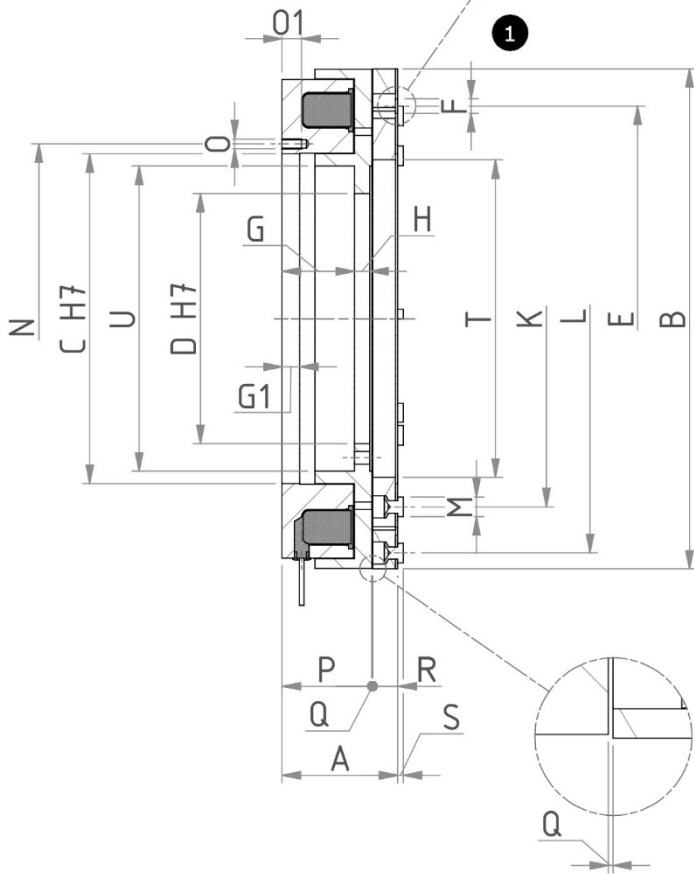
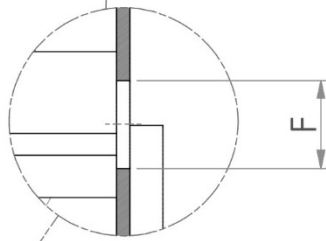
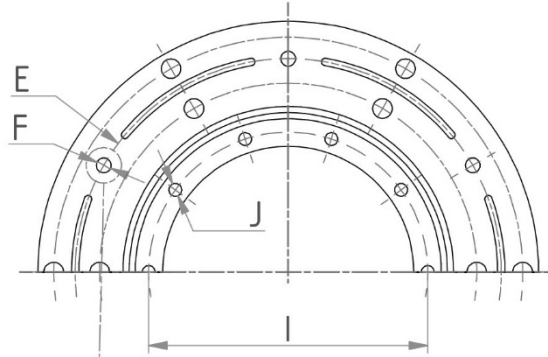


SERIE/MODEL
CODICE/CODE

<b>1</b>	EMSL □□□/DF-B 08.26.□□□.11
----------	-------------------------------

<b>2</b>	EMSL □□□/DF-B-ME 08.26.□□□.12
----------	----------------------------------

<b>3</b>	EMSL □□□/DF-B-MI 08.26.□□□.13
----------	----------------------------------





**FRIZIONI ELETTROMAGNETICHE DOPPIO FLUSSO – B/B-ME, B-MI**  
**FOUR POLE FACE ELECTROMAGNETIC FRICTION CLUTCHES – B/B-ME, B-MI**

**EMSL/DF**  
**B**

**08**

**CARATTERISTICHE TECNICHE**  
**DATASHEET**

	<b>170</b>	<b>210</b>	<b>260</b>	<b>310</b>	<b>400</b>	<b>500</b>	<b>600</b>
<b>Mom. Inseribile Mi (Nm)</b> <i>Eng. Torque Mi (Nm)</i>	160	350	570	1150	2300	3450	5100
<b>Mom. Statico Ms (Nm)</b> <i>Stat. Torque Ms (Nm)</i>	250	550	900	1800	3600	5400	8000
<b>Giri max.</b> <i>Max. R.P.M.</i>	5500	5000	4500	4000	3500	2800	2000
<b>Tempo Inser. (ms)</b> <i>Build Up Time (ms)</i>	182	286	363	473	616	715	800
<b>Tempo Disin. (ms)</b> <i>Decay Time (ms)</i>	83	132	180	242	330	385	400
<b>Potenza (W)</b> <i>Power (W)</i>	65	85	120	240	280	440	576
<b>Inerzia lato Rot Jr (Kgm<sup>2</sup>)</b> <i>Rot. side Inertia Jr (Kgm<sup>2</sup>)</i>	0,0051	0,0155	0,0466	0,1157	0,3818	0,9894	2,1022
<b>Inerzia lato Arm Ja (Kgm<sup>2</sup>)</b> <i>Arm. side Inertia Ja (Kgm<sup>2</sup>)</i>	0,0046	0,0146	0,0321	0,0986	0,3348	0,8371	2,0002
<b>Inerzia lato Arm Ja (Kgm<sup>2</sup>)<sup>a</sup></b> <i>Arm. side Inertia Ja (Kgm<sup>2</sup>)<sup>a</sup></i>	0,0069	0,0186	0,0458	0,1655	0,5787	1,2735	3,3241
<b>Peso (Kg)</b> <i>Weight (Kg)</i>	4,61	7,78	12,86	23,56	94,14	87,19	145,27
<b>Peso (Kg)<sup>a</sup></b> <i>Weight (Kg)<sup>a</sup></i>	5,69	9,29	15,66	35,33	73,16	121,76	215,47
<sup>a</sup> : <b>VARIANTE ME/MI, MOZZO MASSICCIO</b> <sup>a</sup> : <b>ME/MI VARIANT, MASSIVE HUB</b>							

**TABELLA DIMENSIONALE**  
**SIZE TABLE**

	<b>170</b>	<b>210</b>	<b>260</b>	<b>310</b>	<b>400</b>	<b>500</b>	<b>600</b>
<b>A</b>	54	57	60,5	74	94,2	111	137
<b>B</b>	169	216	266	327	409	497	606
<b>C</b>	110	144	180	222	270	325	400
<b>D</b>	80	110	138	170	205	250	336
<b>E</b>	140	172	217	275	348	410	515
<b>F (N°xD)</b>	3x6,1	4x8,1	6x8,1	6x10,1	6x12,1	8x12,1	8x16,1
<b>G</b>	36	37	39	46	59	69	92,2
<b>G1</b>	6	10	11	12	14,3	15	22
<b>H</b>	5,1	6	8,9	8	12,5	16	13,8
<b>I</b>	92	122	152	188	228	275	360
<b>J (N°xD)</b>	4x6,5	8x6,5	10x6,5	10x8,5	10x10,5	12x10,5	12x10,5
<b>K</b>	118	155	190	245	308	365	450
<b>L</b>	155	190	248	305	383	455	555
<b>M (N°xD)</b>	3x11	4x11	6x11	6x12	6x16	8x18	8x20
<b>N</b>	118	154	190	238	286	340	434
<b>O (N°xD)</b>	4xM5	6xM6	6xM6	6xM8	9xM8	9xM8	12xM10
<b>O1 max.</b>	12	13	13	20	16	16	25
<b>P</b>	44,1	45	48,9	58	73,5	87	109,2
<b>Q</b>	0,3	0,4	0,5	0,5	0,6	0,7	0,8
<b>R</b>	9,6	11,6	11,1	15,5	20,1	23,3	27
<b>S</b>	2	2	2	3	4,5	5	5
<b>T</b>	105	134	170	214	260	315	400
<b>U</b>	100	134	164	204	250	296	380
<b>V max.</b>	50	60	70	90	110	130	160
<b>W</b>	78	95	115	142	168	200	230
<b>X</b>	16	20	22	26	35	40	35/85
<b>Y</b>	45	55	55	70	90	100	150
<b>Z (N°xD)</b>	2xM10	2xM14	2xM16	2xM20	2xM24	2xM24	4xM24