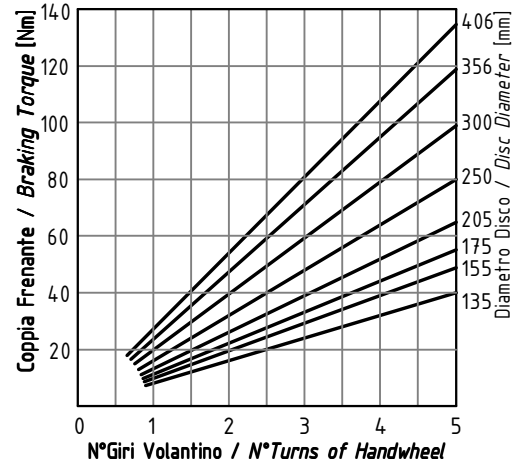
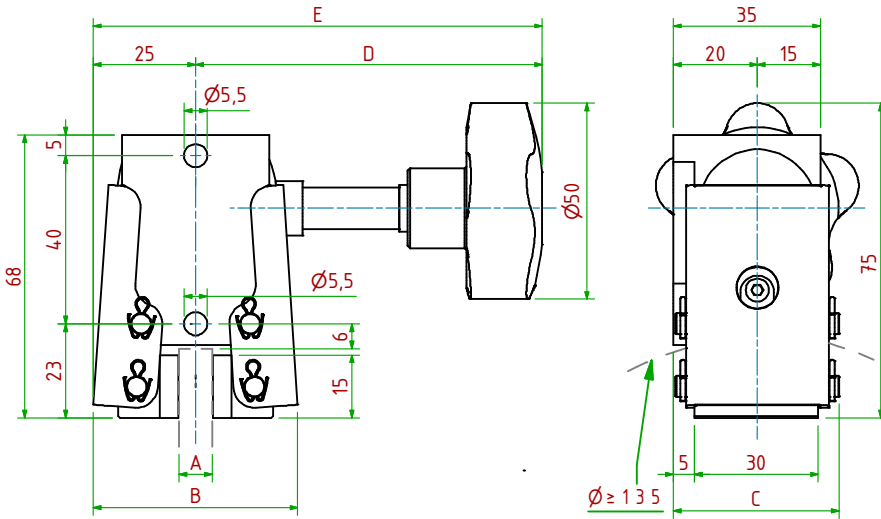


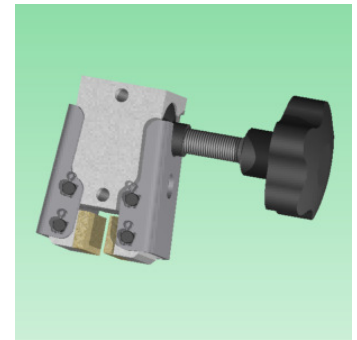
PMC C01/ □□□

Manuale / Hand Operated



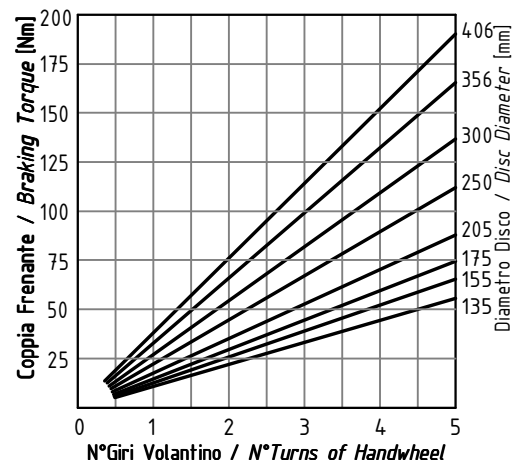
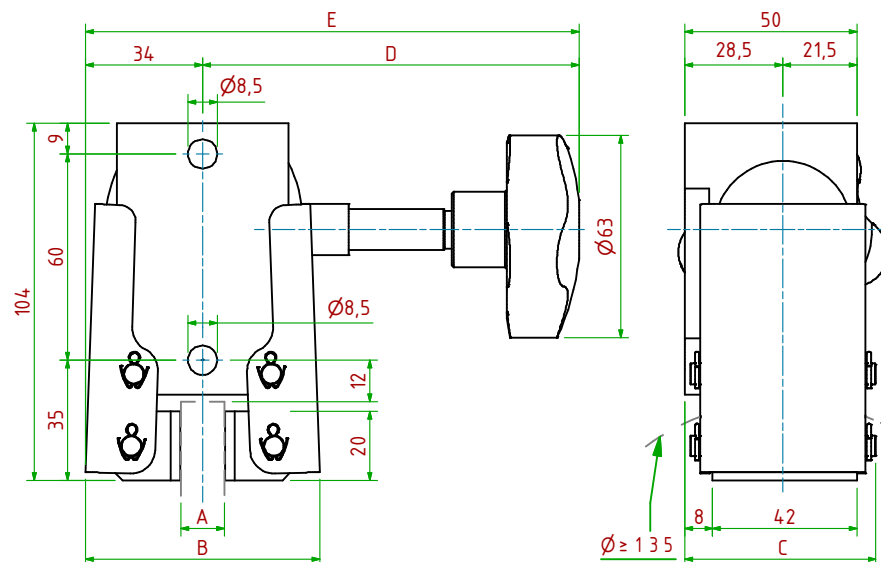
- Coppia Frenante/Braking Torque: $Md = [Ft \times (\Phi(m) / 2 - 0.009(m))]$
Importante: La Coppia Frenante Iniziale può essere più bassa del 30%-50% **Warning:** Initial Braking Torque can be lower of 30%-50%
- Usura massima totale Ferodi/Maximum total wear of pads:
 PMC C01/08 = 8mm PMC C01/12.7 = 4mm

| MODELLO / MODEL | CODICE / CODE | A | B | C | D _{Max} | E _{Max} | Forza Frenante/Braking Force | Peso |
|-----------------|---------------|------|----|----|------------------|------------------|------------------------------|--------|
| PMC C01/ 08 | 19.06.C01.02 | 8 | 50 | 40 | 83 | 108 | Ft= 690N (5 Giri) | 0.6 kg |
| PMC C01/12.7 | 19.06.C01.03 | 12.7 | 50 | 40 | 83 | 108 | Ft= 690N (5 Giri) | 0.6 kg |



PMC C02/ □□□

Manuale / Hand Operated



- Coppia Frenante/Braking Torque: $Md = [Ft \times (\Phi(m) / 2 - 0.013(m))]$
Importante: La Coppia Frenante Iniziale può essere più bassa del 30%-50% **Warning:** Initial Braking Torque can be lower of 30%-50%
- Usura massima totale Ferodi/Maximum total wear of pads:
 PMC C02/08 = 8mm PMC C02/12.7 = 4mm

| MODELLO / MODEL | CODICE / CODE | A | B | C | D _{Max} | E _{Max} | Forza Frenante/Braking Force | Peso |
|-----------------|---------------|------|----|----|------------------|------------------|------------------------------|--------|
| PMC C02/ 08 | 19.06.C02.02 | 8 | 68 | 56 | 110 | 144 | Ft= 1000N (5 Giri) | 1.5 kg |
| PMC C02/12.7 | 19.06.C02.03 | 12.7 | 68 | 56 | 110 | 144 | Ft= 1000N (5 Giri) | 1.5 kg |

