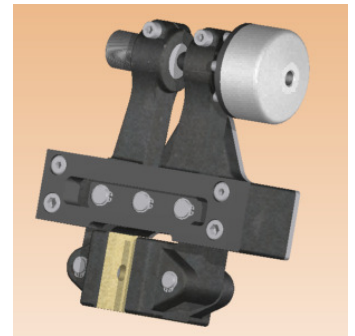
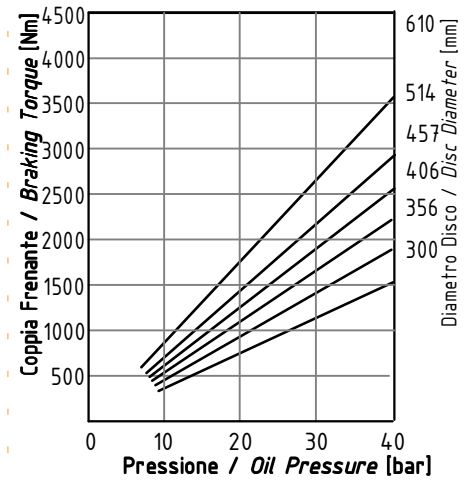
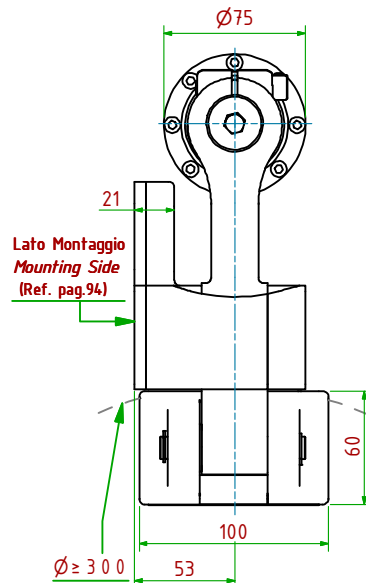
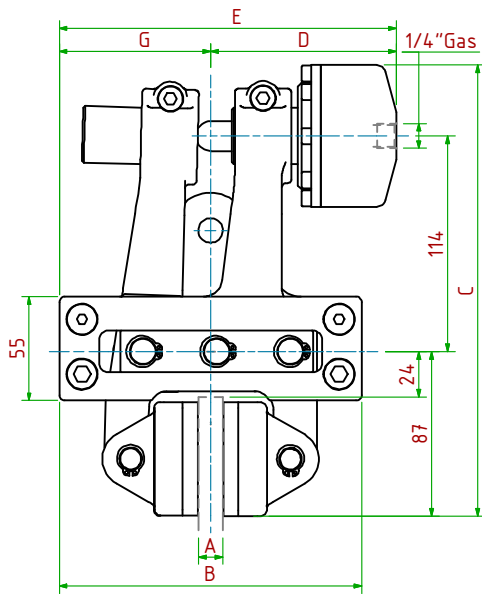


POH031/

Oleodinamico / Hydraulically Applied

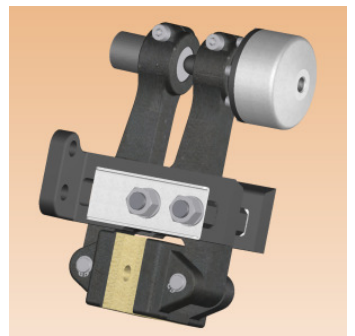
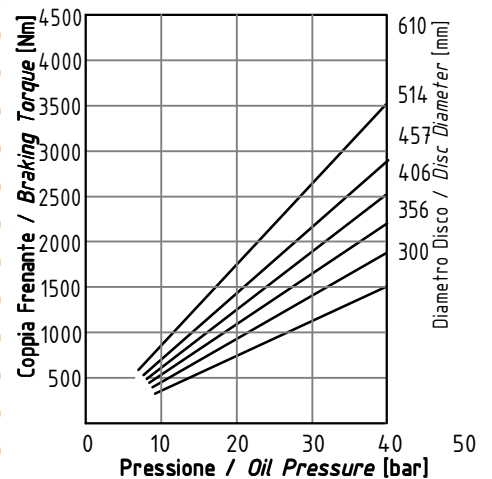
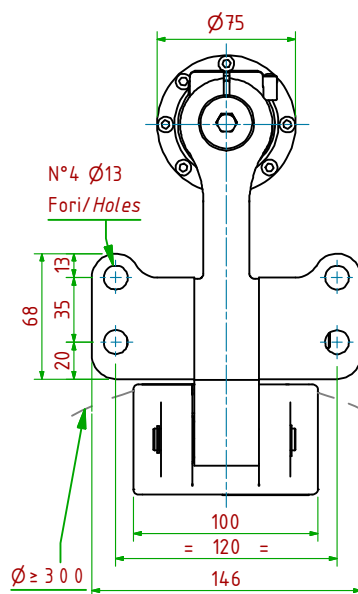
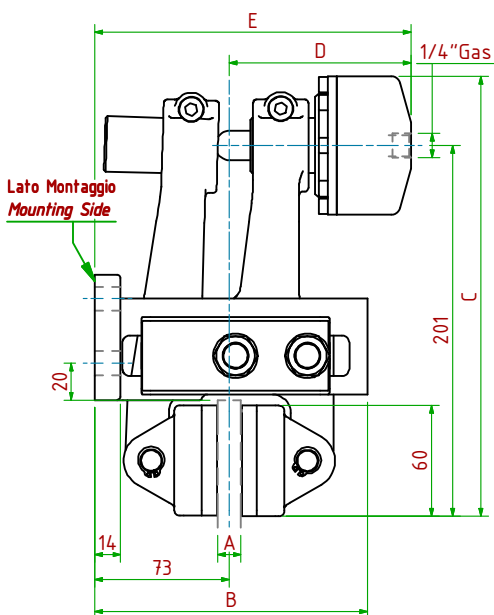


- Pressione di Lavoro/Operating Pressure: **Pl=50bar** - Volume Max Cilindro/Max Cylinder Volume: **27cm³**
- Coppia Frenante/Braking Torque: **Md=[Ft x (ø(m)/2 - 0.033(m))]**
- Importante:** La Coppia Frenante Iniziale può essere più bassa del 30%-50% **Warning:** Initial Braking Torque can be lower of 30%-50%
- Usura Ferodi Massima Totale/Maximum total wear of pads =9mm

MODELLO/MODEL	CODICE/ CODE	A	B	C	D _{Max}	E _{Max}	G	Forza Frenante/Braking Force	Peso
POH031/12.7	19.26.031.03	12.7	160	239	98	178	80	Ft= 13000N (40bar)	10.2kg
POH031/25.4	19.26.031.04	25.4	180	239	101	191	90	Ft= 13000N (40bar)	10.6kg

POHP310/

Oleodinamico / Hydraulically Applied



- Pressione di Lavoro/Operating Pressure: **Pl=50bar** - Volume Max Cilindro/Max Cylinder Volume: **27cm³**
- Coppia Frenante/Braking Torque: **Md=[Ft x (ø(m)/2 - 0.033(m))]**
- Importante:** La Coppia Frenante Iniziale può essere più bassa del 30%-50% **Warning:** Initial Braking Torque can be lower of 30%-50%
- Usura Ferodi Massima Totale/Maximum total wear of pads =9mm

MODELLO/MODEL	CODICE/ CODE	A	B	C	D _{Max}	E _{Max}	Forza Frenante/Braking Force	Peso
POHP310/12.7	19.26.310.03	12.7	148	239	98	171	Ft= 13000N (40bar)	8.7 kg
POHP310/25.4	19.26.310.04	25.4	148	239	105	178	Ft= 13000N (40bar)	8.9 kg